

Cultural Heritage Mapping



Te Rūnanga o NGĀI TAHU

Introduction

Over the past few years Toitū Te Whenua (Environmental Management Unit for Te Rūnanga o Ngāi Tahu) has been mapping cultural and historical sites on the Toitū Te Whenua Geographical Information System (GIS), primarily focusing on the South Island High Country and Kaikōura. This pānui outlines the work that Toitū Te Whenua has undertaken over the past few years and the work that Toitū Te Whenua proposes to undertake in the future in regards to this kaupapa.

What is GIS?

GIS integrates hardware, software and data for capturing, managing, analysing and displaying all forms of geographically referenced information. GIS allows us to view, understand, question, interpret and visualise data in many ways that reveal relationships, patterns and trends in the form of maps.

Ngāi Tahu 2025

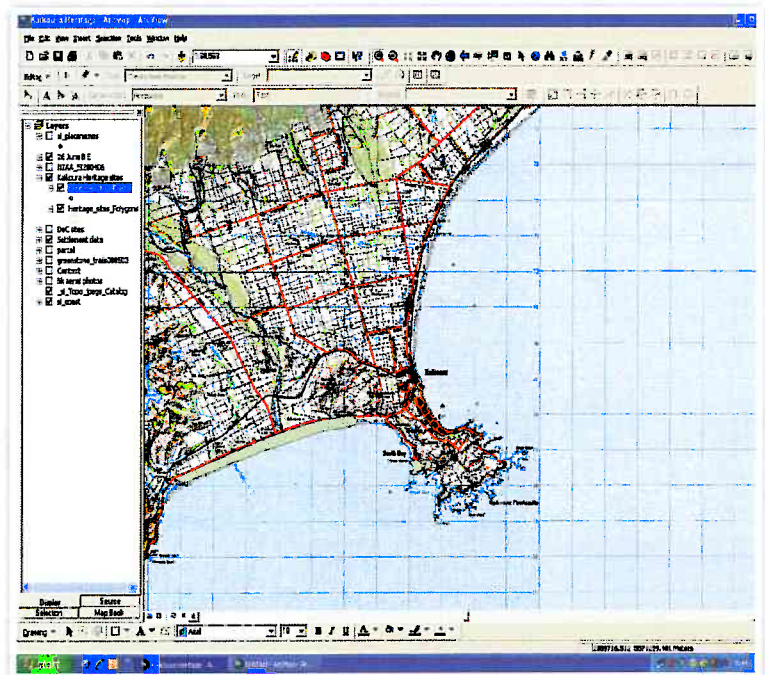
Ngāi Tahu 2025 is the tribal vision document that details the 25 year journey toward the ability of Ngāi Tahu to create and control our destiny. It is the prime strategic document that guides the direction and purpose for the work of Te Rūnanga o Ngāi Tahu. There are several key objectives within Ngāi Tahu 2025 in relation to cultural heritage mapping:

We want to achieve in 5 years:

- Compile a natural resource inventory / Geographical Information System (GIS) database of wāhi tapu, taonga and mahinga kai at both Papatipu Rūnaka and tribal level.

We want to achieve in 25 years:

- Implement a tribal Ki Uta Ki Tai environmental management plan and support it with a comprehensive GIS database and monitoring programme
- Establish a natural resource inventory for all Papatipu Rūnaka using GIS. An annual State of the Takiwā report is produced by Papatipu Rūnaka and reported to TRoNT.



Cultural Heritage Mapping in the South Island High Country

Tenure Review is a process where 3.2 million hectares of pastoral land in the high country is being reviewed, with land being either vested with the Department of Conservation or freeholded.

Information about Ngāi Tahu values in the high country is restricted to limited sources. Toitū Te Whenua is working with kaitiaki rūnaka and kaumatua researching Ngāi Tahu cultural values in the high country and mapping these values on the Toitū Te Whenua GIS. The mapping of cultural values will allow Ngāi Tahu to become more strategic and proactive in protecting Ngāi Tahu cultural values in the high country.

Kaikōura Heritage Alert Layers Project

Development is continuing to threaten Māori cultural and archaeological values within Kaikōura. Te Rūnanga o Kaikōura, Te Rūnanga o Ngāi Tahu, the New Zealand Historic Places Trust and the Kaikōura District Council are working together to develop an accessible resource to alert planning and development practitioners to areas of high cultural significance within Kaikōura.

continued on page 2

The aim is to produce a series of GIS maps that accurately record, define and identify all cultural sites within Kaikōura. So far, Toitū Te Whenua has established support networks to complete the Kaikōura Heritage Alert Layers Project and has gathered information on cultural values that have been mapped onto the Toitū Te Whenua GIS.

Next Steps

In the 2008/09 financial year Toitū Te Whenua aims to complete the 'Cultural Heritage Mapping in the South Island High Country Project' and 'The Kaikōura Heritage Alert Layers Project'. Toitū Te Whenua also proposes to begin working with kaitiaki rūnaka focusing on the West Coast, Canterbury and Banks Peninsula areas. Toitū Te Whenua will also be aiming to develop access protocols to ensure appropriate and respectful access to cultural information. In the 2009/10 financial year Toitū Te Whenua proposes to work with the kaitiaki Southland Papatipu Rūnaka to begin cultural mapping and to work with Otago Papatipu Rūnaka to support the cultural mapping that the Rūnaka has already undertaken.

