

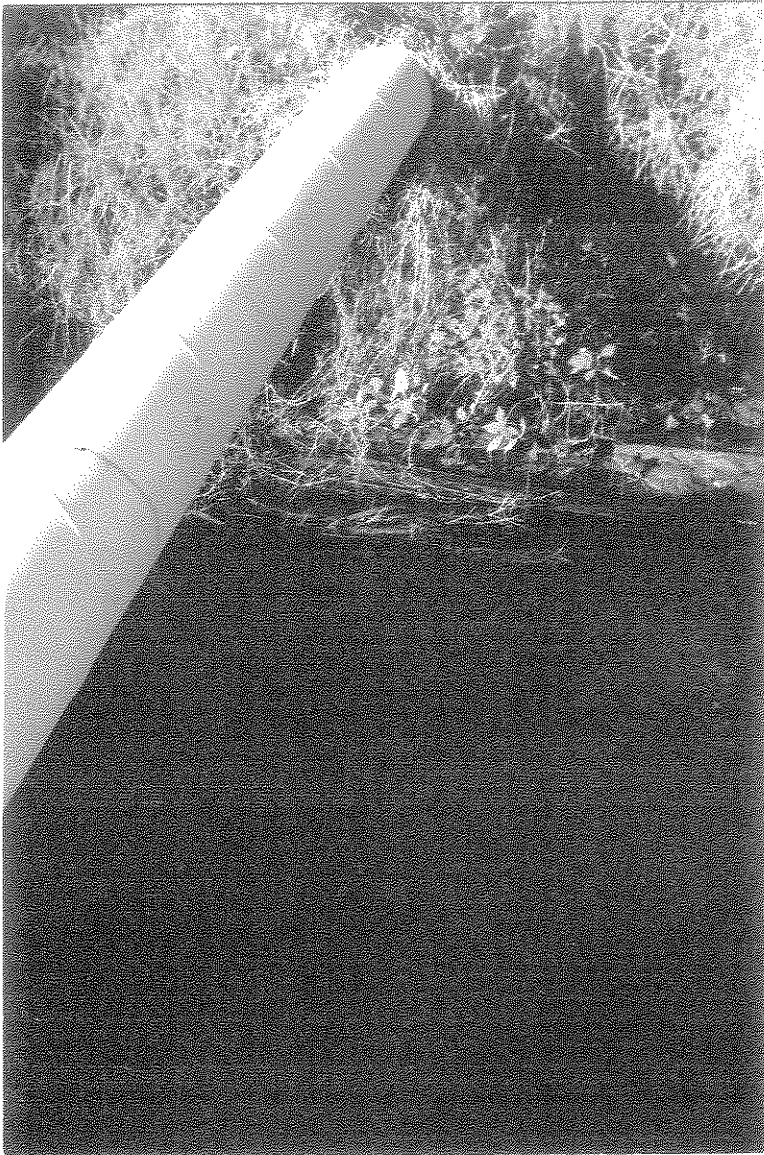
Ruakaka River laden with sediment after flooding -
March 29th 2007 .



Taken from the bridge, Maunden Point Road ↑ .



Sediment laden water at the Weir, Jagger Road
W.D.C water uptake . April 2008 .



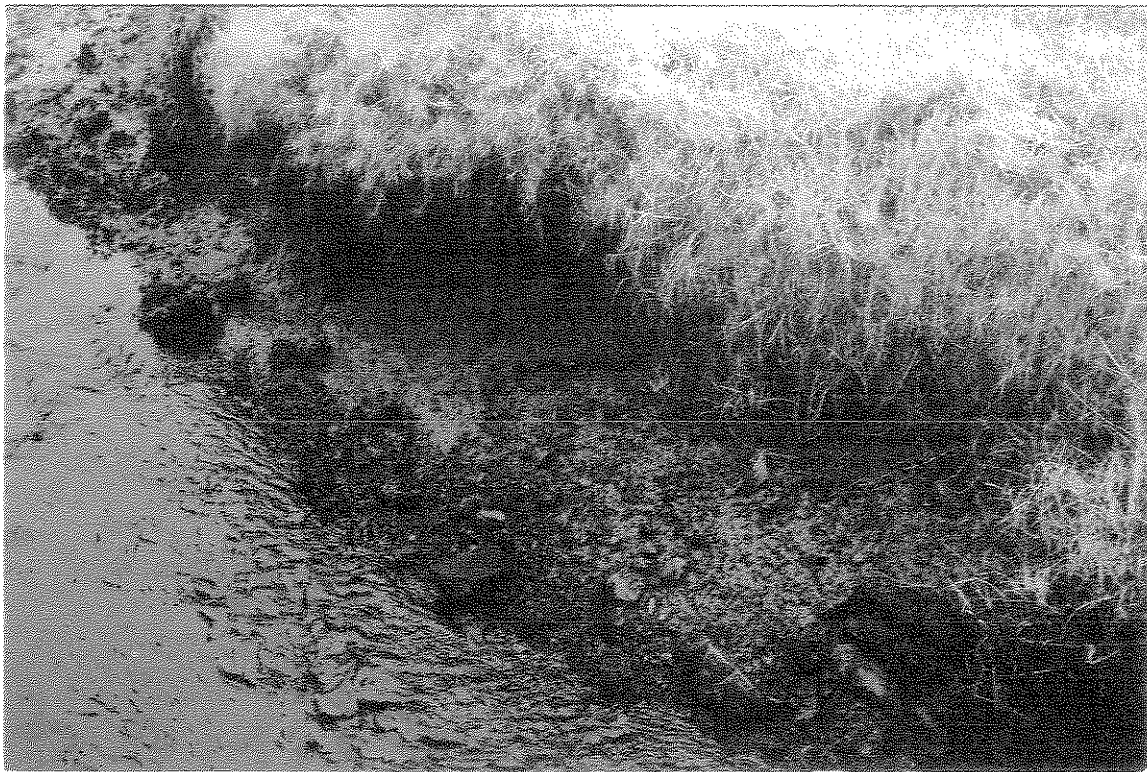
Peat laden water
discharged from
2 industrial sites
into the Ruakaka
River via a drain.



→ river

The point where the drain enters the
Ruakaka River.

The colour of the Ruakaka River bed and banks prior to the discharge of heat from 2 industrial sites via a drain.



The present state of the river bed and bank at the same location after discharges from the 2 industrial sites commenced in May 2008.
Taken 24. 6. 09