



Raukawa Trust Board

Board of Inquiry – Proposed NPS on
Freshwater Management

26 August 2009

Presentation by Steph O'Sullivan

Our Submission

- Background to Raukawa
- Concerns about current policy environment
- Key Policy Issues Going Forward
- Some thoughts or suggestions (fish hooks)
- Conclusions

Raukawa Tu Tangata

The Raukawa Trust Board (the Board) is based in Tokoroa and represents the descendants of the Tupuna Raukawa.

As the recognised Iwi Governing Body, the Board acts in the interests of the whanau and hapu of Raukawa.

Raukawa's historical relationship with the Waikato, Waipa and Waihou Rivers and catchments extend over some 500 year period. The total tribal area encompasses some 530,000 ha.

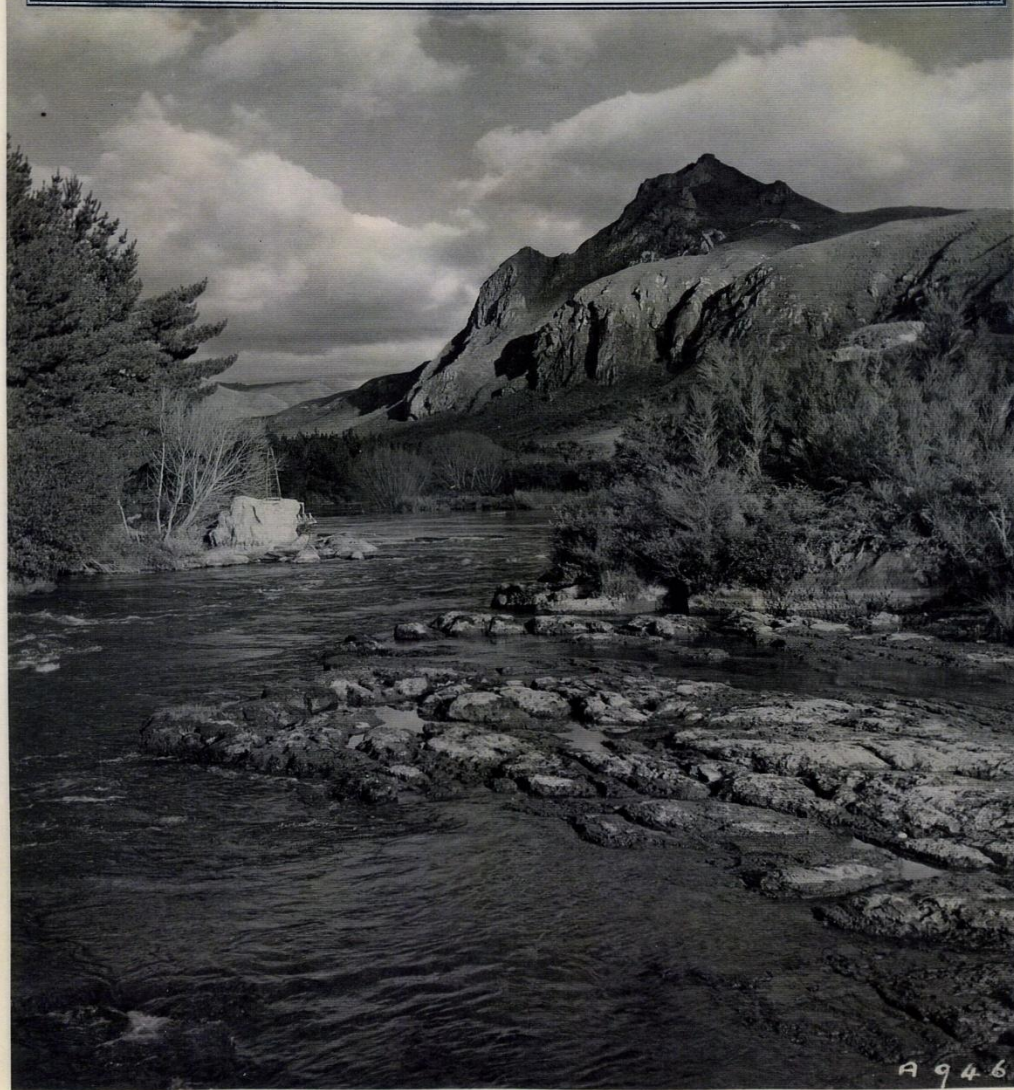
Water - The Lifeblood of Raukawa

- The Rivers are in a metaphorical sense – “the veins carrying the lifeblood of Raukawa”.
- The Rivers are not separate from the people but part of the people. Nor is the River separate from its surrounds. We regard our Rivers as whole living entities; including not just banks, beds and waters, but its many streams, lakes, tributaries, flora and fauna, flood plains, as well as its metaphysical being.
- Our historical relationship with these rivers has been a complex one; source of sustenance – food, spiritual nurturing, cleansing, mode of transport, mode of communication.

Key Tenets of our submission

- The diminished value of the **intrinsic** value of water as a sustaining force for us all – *Water is a taonga* (terms such as “*waste assimilative capacity of water*);
- Our desire to restore, maintain and enhance the *Mauri* of water within the Raukawa rohe;
- Our desire to restore, maintain and enhance our role as *kaitiaki* within our rohe;
- Our desire to ensure that the traditional relationship between Raukawa and water within our rohe is acknowledged, respected, maintained and afforded due protection into the future;

THE AREA SHOWN IN THE BACKGROUND WAS THE NARROWEST SECTION OF THE WAIKATO RIVER, AND THE SITE OF AN ANCIENT RIVER CROSSING USED BY OUR TUPUNA UP TO THE TIME THE AREA WAS DEVELOPED AS A DAM SITE



A 946

LOOKING UPSTREAM FROM NEAR SITE OF THE PROPOSED
WHAKAMARU DAM. MOUNT KAAHU

Key concerns about current policy environment

- Our values are not currently incorporated into water management;
- Water perceived as a ‘resource for use’ lacking a more fundamental respectful approach – it is a taonga;
- Water as a key Treaty issue not being recognised and provided for;
- This process, as an example, reflects a situation where we as Maori are just another ‘submitter’ – does not reflect the treaty partnership
- Lack of overall ‘plan’ for water – encompassing a national and regional framework, reflecting tangata whenua values;

Key concerns cont'd

- Major 'disconnect' between 'NZ Inc' / Regional Councils / District Council activities;
- Lack of integration in the way we plan or not plan for water – ground & surface water, land & water, demand & supply.. etc;
- A kind of general assumption that as Kiwi's we 'have plenty of water'; and
- Lacsidasical approach to a fast approaching global 'war' on water

Key Policy Issues Going Forward?

- In principle, support more national policy and standard setting guidance
- Support an NPS that promotes greater integration of the way in which we manage water.
- An NPS that fundamentally changes the way we ‘value’ water. Set clear goals and provide workable pathways for communities on how to get there
 - Promote community collaboration & partnerships
 - Rigorous water planning and management regimes
 - Promote education about Water – we don’t do this!

Policy Issues cont'd..

- A true partnership approach between Crown & Iwi – ‘consider’ tangata whenua values is no longer adequate.
- Any NPS must reflect the new era of co-management
- Account for Maori sustainable development: we are farmers & foresters. We need to secure a future.
- Learn from overseas experience – Swedish model – bold and gutsy objectives, provides certainty and you know what you’re in for
 - i.e. be bold about environmental bottom lines.

Some fish hooks...

- Concerns about too many ‘strands’ of water work going on – apparent lack of integration.
 - Iwi Leaders Forum
 - Land & Water Forum
 - MfE work on Water Allocation & Ecological Flows
 - TOKM – Fresh Water Issues
 - Regional Councils
- Water Allocation – a key element of any good fresh water management regime
 - Transferability of water rights – many potential hooks
 - Failure of market system in achieving environmental outcomes, especially in providing for long term sustainability. Inter-generational equity values etc.
 - Our view – this is a key element to be resolved
- Achieving ‘integrated’ management requires a fundamental change to the way we do business

Where to from here?

Take stock – over last 12 months significant changes in National ‘context’;

- We would like the Iwi Leaders Forum on Freshwater Issues to be resourced to work more comprehensively with Iwi on finding durable pathways forward;
 - Convert our views into good ‘planning speak’
- Account for Co-Management Framework being developed on Waikato River and its implications for this proposed NPS; and
- Account for the Vision & Strategy for the Waikato River – what are the implications of this NPS?

We might be able to help...

- International Recognition of Traditional Knowledge e.g: Chapter 18 of Agenda 21 on the protection of freshwater resources recommended the full participation of indigenous people in integrated water resource management
- By adopting the UNESCO Declaration on Cultural Diversity in 2001 the international community recognised the contribution traditional knowledge can make in achieving good governance and sustainable development.
- Given the chance to participate fully – we could add real value to this process...

Conclusions

- Think this process is important & reflects the need for greater national guidance
- On a national level - Too many ‘balls in the air’, not the same juggler. Can this NPS be a useful tool if not lined up?
- The success of ‘NZ Inc’ – water a fundamental part of NZ’s future
 - includes the Treaty Partnership
 - Yet we seem to be doing business the same old way....
- Will this proposed NPS provide for the key tenets of our submission in its current form.....?

Whakatauki

- “He reo e rangona, engari he kanohi kitea”
- *A voice may be heard, but a face needs to be seen.....*

Thank you



Lake Karapiro