

IN THE MATTER of the Resource Management Act 1991

AND

IN THE MATTER of a Board of Inquiry appointed under section 146 of the Resource Management Act 1991 to consider applications by Mighty River Power Limited for resource consents to construct, operate, and maintain a wind farm at Turitea

**TURITEA WIND FARM
ALLAN WYATT - MEMORY MAP CLARIFICATION
7 OCTOBER 2009**

1. INTRODUCTION

- 1.1 My name is Allan Wyatt. My qualifications and relevant experience are set out in my statement of evidence in chief. I repeat the confirmation given in that statement that I have read and agree to comply with the Code of Conduct for Expert Witnesses (July 2006).
- 1.2 This statement comments on the information provided to the Board to be run within the Memory Map program.

2. MEMORY MAP – ZVI Mapping

- 2.1 The Zones of Visual Influence (ZVI) bands used within my assessment were located at 1.5 km, 3.0 km, 8.5 km and 17.0 km intervals from the base of the Turitea Wind Turbines. The ZVI bands were mapped using GIS software and are included within my original Landscape and Visual Assessment and evidence. The ZVI bands were accurately mapped within separate GIS software.
- 2.2 The ZVI bands were also bought into the Memory Map files provided to the Board to assist in understanding the site and locality, and to demonstrate a simpler version of the methodology that was used within the visual impact assessment.
- 2.3 Initially when locating the wind turbines within Memory Map there was a discrepancy with the turbine locations due to differences in the datum used. Unfortunately when these turbine locations were adjusted to the correct datum the earlier ZVI bands were not updated. Therefore the ZVI bands in the data provided to the Board to be run within the Memory Map programme were positioned approximately 200 m to the south and slightly west of the correct position.
- 2.4 The red, dashed line in Figure 1 shows the incorrect location of the ZVI bands included in the Memory Map files given to the Board. The blue, solid line shows the correct location that was used within my original assessment and evidence.

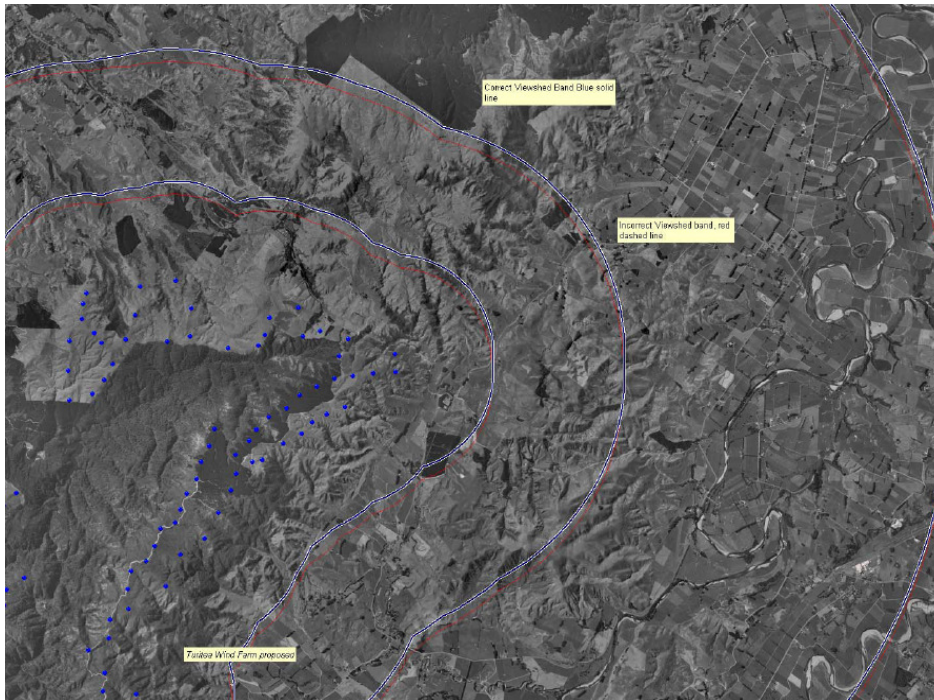


Figure 1 The ZVI bands (red – incorrect location; blue, correct location)

3. THE IMPLICATIONS OF THE MEMORY MAP ZVI DATA

3.1 I confirm that the inaccurate ZVI bands included in the Memory Map data do not change any of my findings or conclusions as presented in my evidence and before the Board of Inquiry, for the following reasons:

- (a) Memory Map was not used to arrive at any of the findings or conclusions relied on for my assessment. Memory Map was only used as a programme to assist in discussing my findings before the Board.
- (b) The ZVI band locations were calculated in ArcGIS, not Memory Map. The distances for each of the photomontages were also calculated in 3D Studio Max and confirmed in ArcGIS, not Memory Map.
- (c) The number of residential dwellings identified within the 3km ZVI band was calculated Beca Consultants, not Memory Map.

Allan Wyatt

7 October 2009