

Personal Submission of Lyn & Kevin Low

- 1. We live at 107 Ngahere Park. We built our home 7 years ago after seeing the section and falling in love with the expansiveness and freedom of the area.

It's an environmentally efficient design, peer reviewed by the school of architecture of Victoria University - Ms Price commented on the white colour but it is part of the low carbon footprint design.

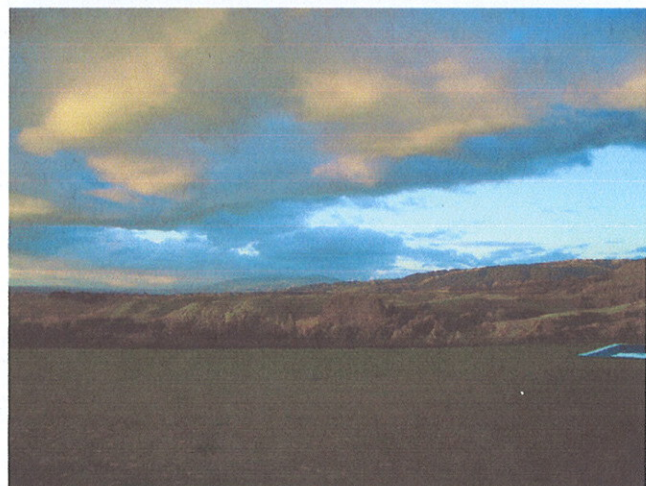
I would like to highlight two features of the home relevant to this hearing – floor to ceiling windows – literally- on all north facing rooms. The ranges thus become our wallpaper, our art, our sculpture from all our living rooms. I hope you can understand our attachment to, and sense of ownership of the foothills and the enjoyment we derive from them on a constant basis.

The second feature is the indoor-outdoor relationship – all windows slide to make significant openings – we live with an opened house during summer.

- 2. Of particular note is our bedroom when it is usual in summer to sleep with the door wide open – note even the moat to keep four legged creatures from coming in. I have tried some experiments to get a feel for the sound attenuation – 5 dB is likely. This would subject us to 30 dB – 10 dB (or twice the sound pressure level) above the WHO guidelines for restful sleep.

- 3. When we moved there we could see no turbines – now we see 70 from sitting on the couch in the living room, and of course from every other room. I find them rather frenetic – not sculptural machines as described by Mr Astey, or graceful elegant structures that enhance the vista as described by Mr Wyatt, or sleek, technological marvels as described by the applicant.

- 4. The moods of the vista are a constant delight, changing as it does with colour, light, season. You can see the house is positioned on an escarpment with the ground falling sharply to the north and to the east. This makes mitigation by planting quite impossible unless it takes place within a few metres of the house.



5. The native vegetation you can see in the foreground is fully grown, being part of a 1.5 ha mature native bush gully to the east and north of the house.
6. We believe we would have a partial or full view of an additional 23 Turitea turbines from windows of our home. If this project is consented as presented, we would have a view of turbines over the greater part of our 360 degree view - from 21 degrees NNE to 215 degrees SSW.
7. There are 21 turbines within a 3 km radius of our home. Some of these are partially shaded and we believe we can live with these. It leaves 88, 87, 86, 85, 84, 83, 82, 81, 80, 79, 78, 77, 76, 75, 74, which it is quite impractical to mitigate by planting due to the steep falloff of our land towards the turbines.
8. We seek the Board to decline these turbines on the basis they will have a high or adverse visual effect that cannot be mitigated, and have a high potential to expose us to noise conditions over the WHO guidelines for sleeping.
9. Our position would leave us 8 Turitea turbines in view from our home at a distance greater than 3 km, and an imposing unnatural landscape as we moved about the city. This is not our ideal and we believe would leave the people of Palmerston North culturally poorer and the city reduced to an industrial belt landscape. We would be much happier if the application was declined in full.

