

Figure 1. Direct transfer of vegetation showing exotic weed infestation and very limited survival of trees shrubs above 1 metre in height. Picture taken from main ridge line



Figure 2. The invasion of brown top along road sides precludes the growth of all indigenous plant species.

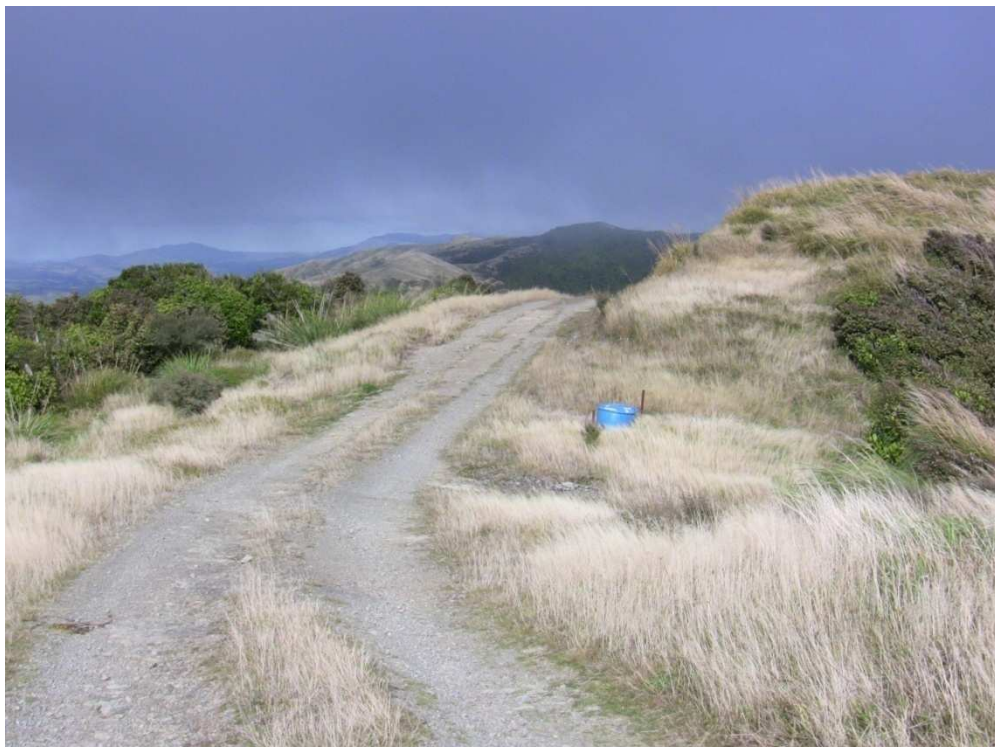


Figure 3. Extensive vegetation associated with road-side cuttings along Turitea Catchment Track. Taken from near proposed turbine site 0029.



Figure 4. Diverse vegetation on road-side cuttings clings tenuously to bare rock faces. Taken from near proposed turbine site 0021.



Figure 5. Rewarewa (*Knightia excelsa*). **(a)** Previously these rewarewa of 10 metres or more in height would have been sheltered by the pine forest. With the pines gone, the rewarewa rapidly loses vigour and dies due to exposure. Taken from near proposed turbine site 10 **(b)** Rewarewa grow quite vigorously in the shelter of the remaining pine plantation (arrowed). Taken from near proposed turbine site 003.

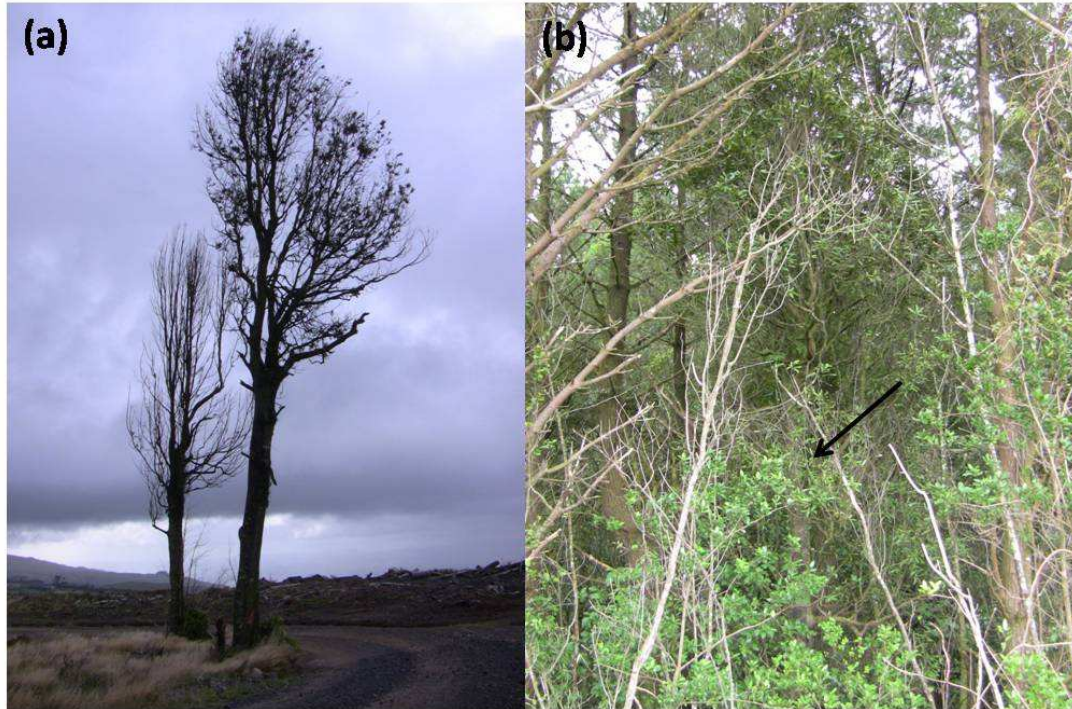


Figure 6. Mature tawa (*Beilschmiedia tawa*) growing in amongst pines near proposed turbine site 003.



Figure 7. Diverse vegetation associated with remaining pine plantation. Plant species visible include wineberry, tree fuchsia, pate, rangiora, mahoe and various ferns. Taken from near proposed turbine site 003.



Figure 8. Contiguous wind roof associated with horopito and other shrubland vegetation on windward side of Turitea Catchment Access Road. Taken from proposed turbine site 0029.



Figure 9. Edge effect. Further wind-associated loss of vegetative cover associated with removal of wind roof. Skeletons of horopito are all that remain.



Figure 10. Several plant species such as *Coprosma grandifolia* represent important food sources for birds right up to the ridge line along the Turitea Catchment Access Road.



Figure 11. Even with direct vegetation transfer, exotic weed species (browntop, foxglove) soon proliferate.



Figure 12. Between proposed Turbines 0027 and 0034 associated with the area called 'Zig Zag', the road is steep and has several tight corners. Taken from near proposed turbine site 0032.

