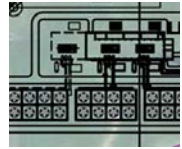


**Te Mihi Power Station  
Landscape Mitigation Plan**



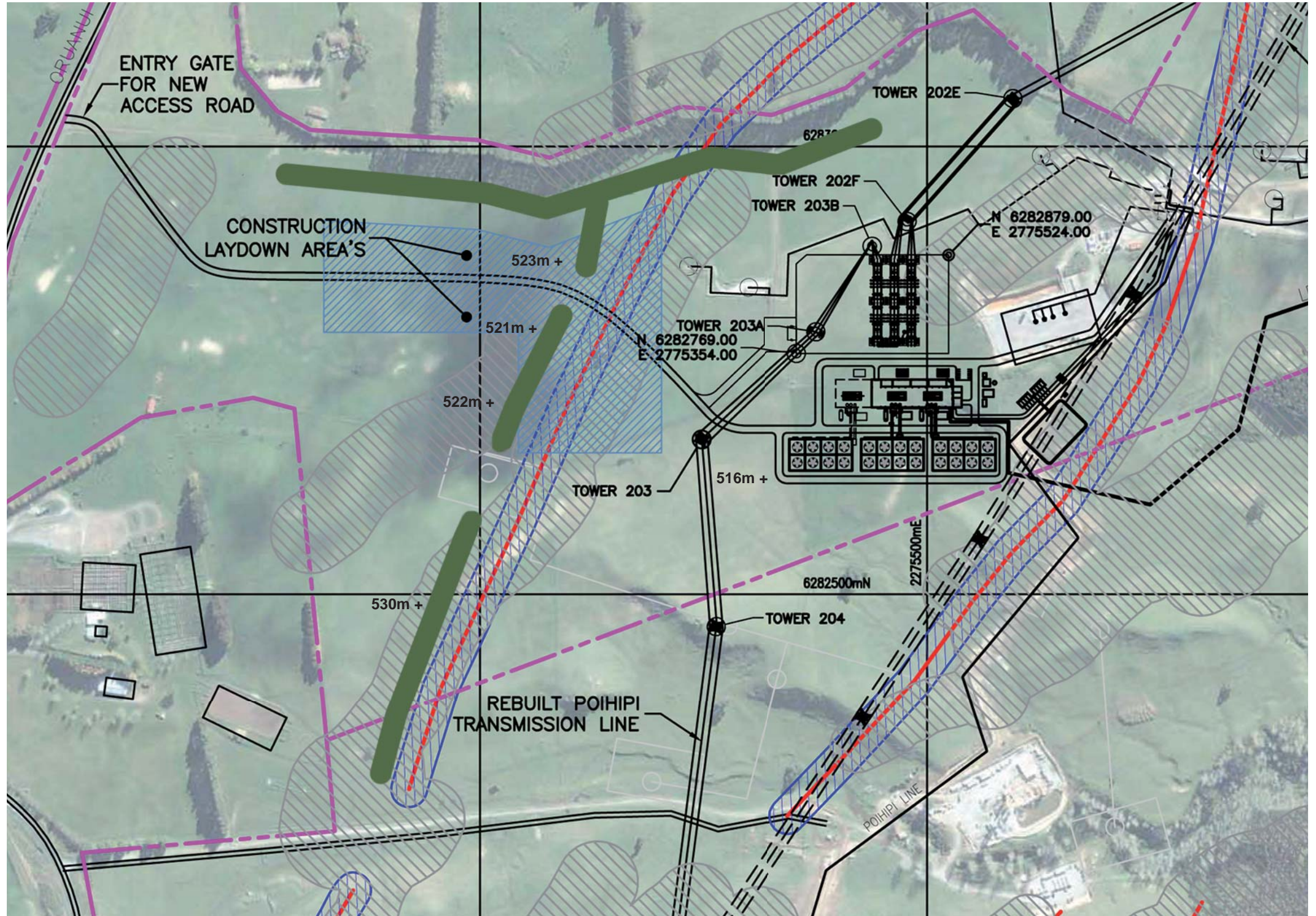
Mitigation Planting



Proposed Condensing Steam Turbine Layout

523m + Spot Heights

Proposed mitigation planting are groups of Pine (*Pinus radiata*) and Japanese Cedar (*Cryptomeria japonica*). The mitigation planting will be located on the elevated land to the west and the north-west of the development site, as indicated on this plan, and the mitigated simulations. Planting will be carried out at 3.0m spacings, fenced and protected from stock access, and will be subject to normal silvicultural practice. Planting will comprise a staggered double row (one of Pine for speedy growth, and one of Japanese Cedar for long term amenity) and will be fenced and maintained. The intention of the proposed mitigation planting is to replicate local patterns of woodlot plantings within the wider landscape.



NOT TO SCALE