

# Lake Tekapo Inflow

M:\22163\Data Tables\8790\[Lake Tekapo Inflow.xls]Summary

All values are flows in cubic metres per second

Date: 13/12/04

Site No.8790

Version: 1

Catchment Area (km<sup>2</sup>) **1420**  
 Data period **1925 - 2004**

## Low Flow Statistics (Provided by Environment Canterbury, 2004)

Mean Annual Low Flow (MALF) (m<sup>3</sup>/s) Not Available  
 5 Year Low Flow (m<sup>3</sup>/s) Not Available  
 10 Year Low Flow (m<sup>3</sup>/s) Not Available

## Monthly Statistics

### Full Record Statistics

	Jan	Feb	Mar	Apr	May	Jun	Jul	Aug	Sep	Oct	Nov	Dec	Annual Means
90% Highest (m <sup>3</sup> /s)	171.8	162.3	127.2	133.8	108.1	79.8	63.1	66.5	84.6	125.4	155.5	159.2	100.1
<b>Mean Flow (m<sup>3</sup>/s)</b>	<b>122.5</b>	<b>108.0</b>	<b>91.4</b>	<b>82.2</b>	<b>66.9</b>	<b>53.0</b>	<b>43.3</b>	<b>44.7</b>	<b>53.0</b>	<b>83.2</b>	<b>106.4</b>	<b>126.9</b>	<b>81.7</b>
Median Flow (m <sup>3</sup> /s)	112.8	97.3	86.7	76.2	61.3	51.1	39.5	38.9	44.8	78.0	97.1	117.5	81.0
10% Lowest (m <sup>3</sup> /s)	88.4	69.6	61.6	44.4	36.8	31.7	27.6	27.3	29.7	48.3	68.1	88.2	65.6

### 1980 - 2003 Statistics

	Jan	Feb	Mar	Apr	May	Jun	Jul	Aug	Sep	Oct	Nov	Dec	Annual Means
90% Highest (m <sup>3</sup> /s)	172.2	127.7	129.0	116.0	88.9	85.9	71.8	67.7	92.6	155.4	178.3	182.5	104.6
<b>Mean Flow (m<sup>3</sup>/s)</b>	<b>129.4</b>	<b>95.9</b>	<b>91.9</b>	<b>77.7</b>	<b>65.1</b>	<b>63.1</b>	<b>49.8</b>	<b>52.7</b>	<b>60.4</b>	<b>94.8</b>	<b>112.4</b>	<b>137.1</b>	<b>85.9</b>
Median Flow (m <sup>3</sup> /s)	121.1	92.8	85.3	72.3	64.2	59.8	45.1	54.7	48.8	88.6	97.9	128.3	85.1
10% Lowest (m <sup>3</sup> /s)	90.1	71.2	58.0	43.7	41.8	33.6	32.6	34.8	35.8	51.6	72.8	90.9	73.2

## Seasonal Statistics

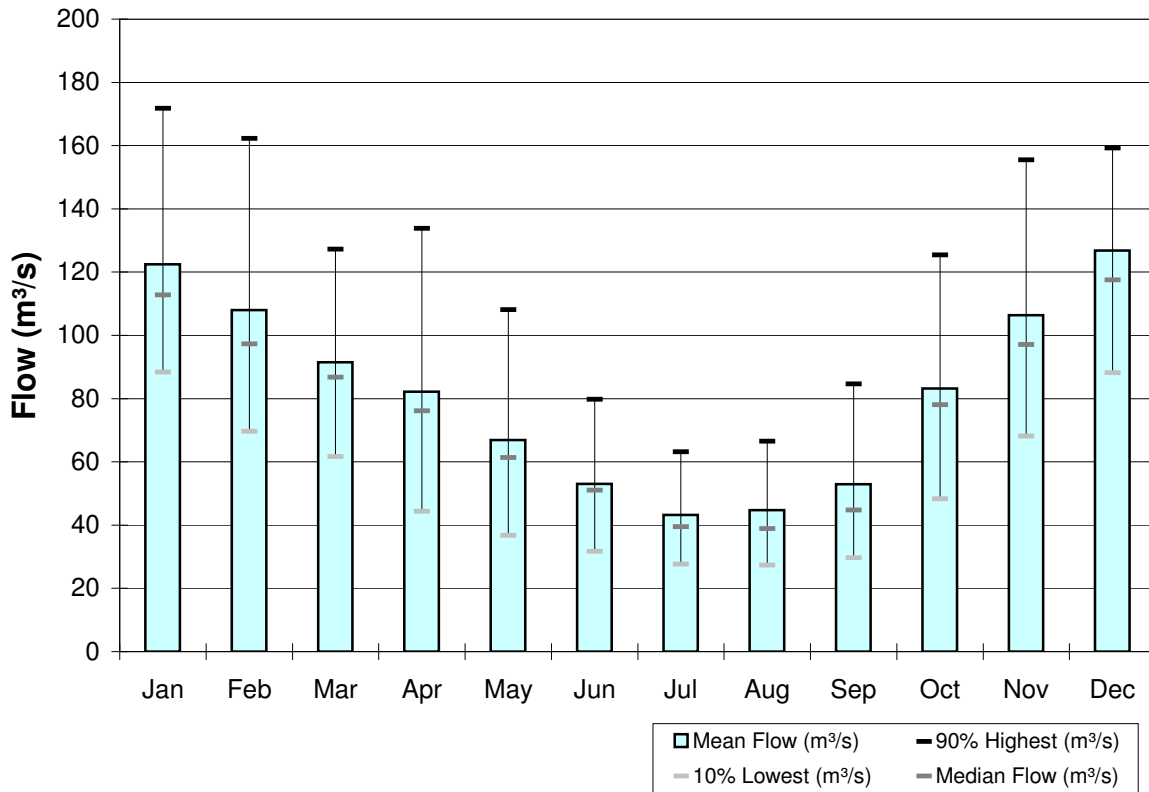
### Full Record Statistics

	Summer	Autumn	Winter	Spring	
90% Highest (m <sup>3</sup> /s)	147.0	108.7	61.8	112.7	Summer = Dec, Jan, Feb Autumn = Mar, Apr, May Winter = Jun, Jul, Aug Spring = Sep, Oct, Nov
Mean Flow (m <sup>3</sup> /s)	<b>119.0</b>	<b>80.3</b>	<b>46.9</b>	<b>80.9</b>	
Median Flow (m <sup>3</sup> /s)	115.3	79.1	45.6	81.6	
10% Lowest (m <sup>3</sup> /s)	87.7	55.6	32.1	56.6	

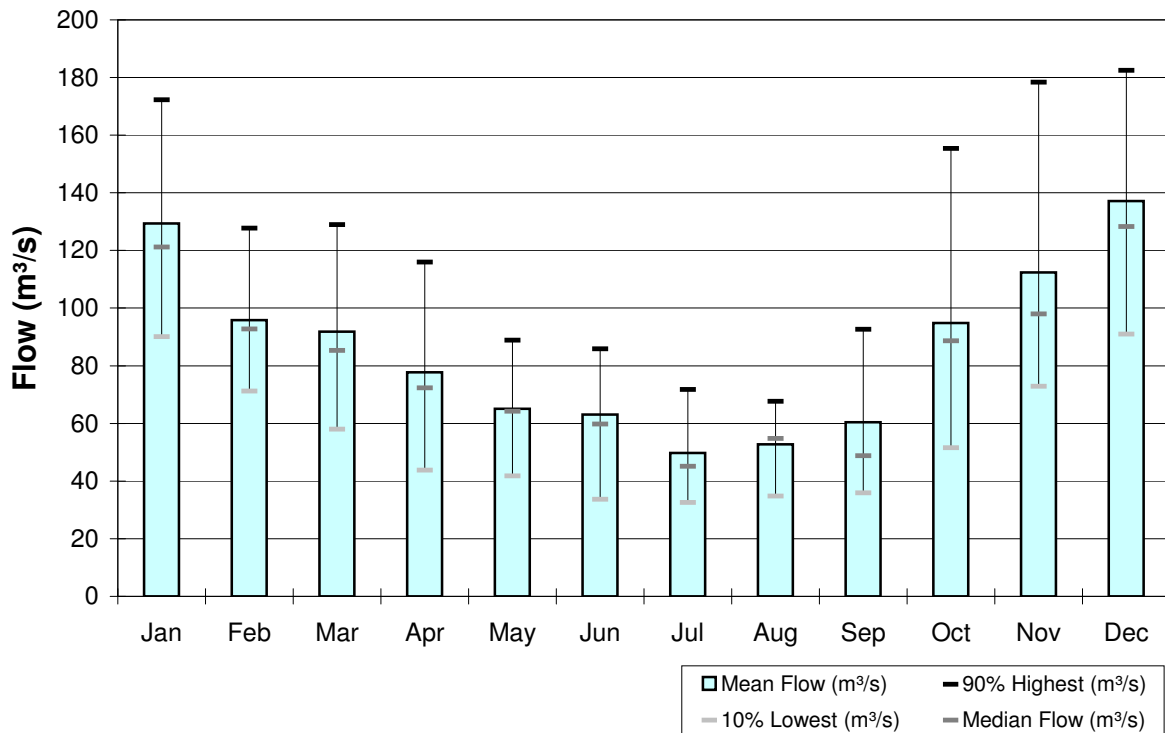
### 1980 - 2003 Statistics

	Summer	Autumn	Winter	Spring
90% Highest (m <sup>3</sup> /s)	163.9	104.6	66.5	119.3
Mean Flow (m <sup>3</sup> /s)	<b>122.3</b>	<b>78.2</b>	<b>55.1</b>	<b>89.3</b>
Median Flow (m <sup>3</sup> /s)	116.4	76.4	55.5	86.1
10% Lowest (m <sup>3</sup> /s)	96.3	55.4	38.7	64.4

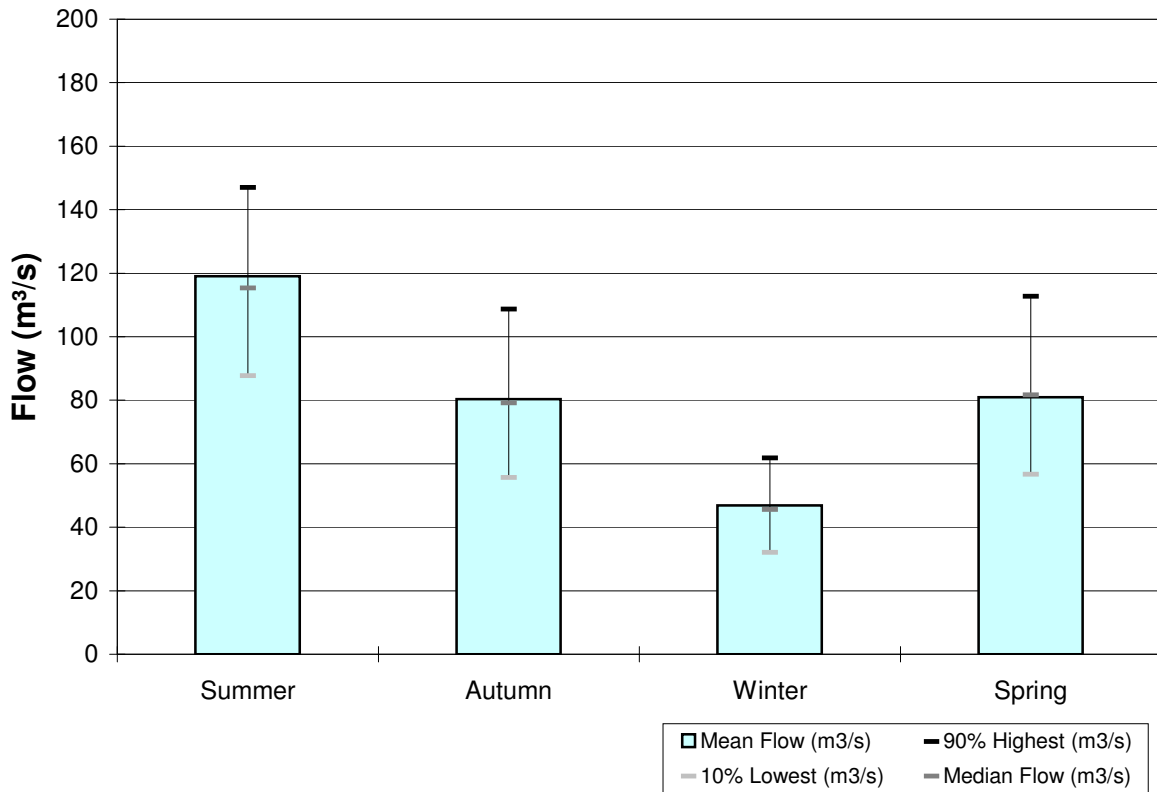
### SITE 8790 Lake Tekapo Inflow - MONTHLY FLOWS FULL RECORD (Apr 1925 - Oct 2004)



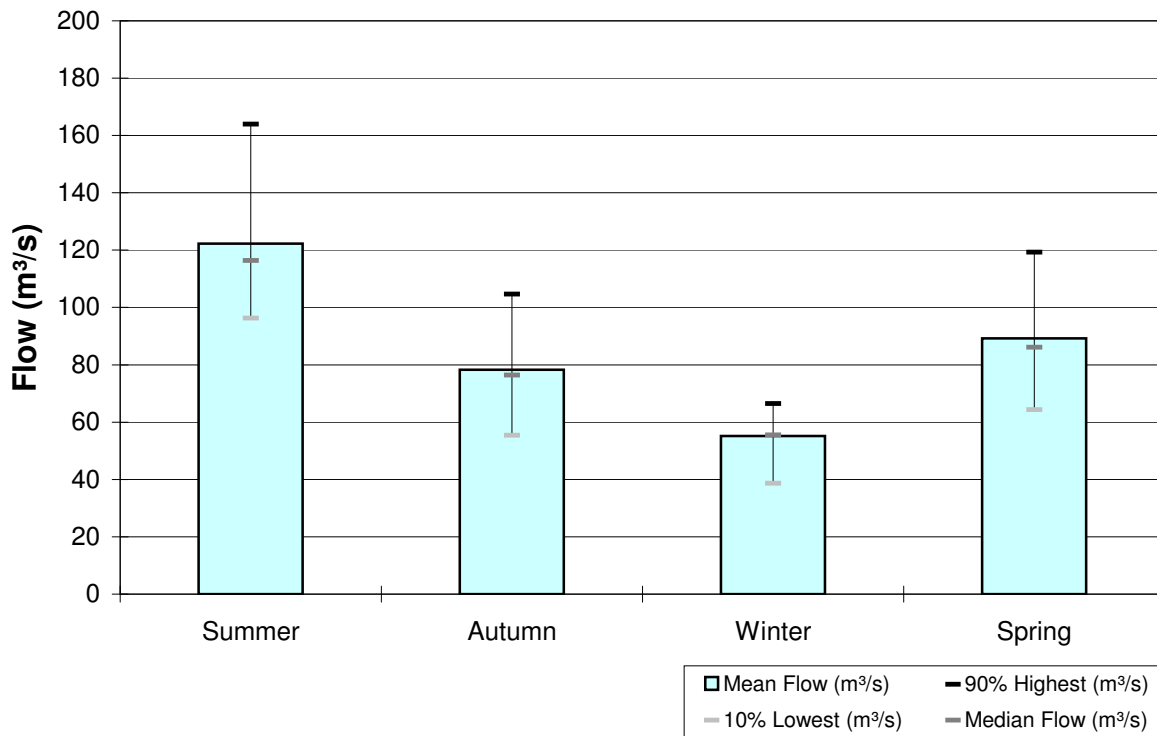
### SITE 8790 Lake Tekapo Inflow - MONTHLY FLOWS JAN 1980 - DEC 2003



**SITE 8790 Lake Tekapo Inflow - SEASONAL FLOWS  
FULL RECORD (Apr 1925 - Oct 2004)**



**SITE 8790 Lake Tekapo Inflow - SEASONAL FLOWS  
JAN 1980 - DEC 2003**



All values are flows in cubic metres per second

Year	Jan	Feb	Mar	Apr	May	Jun	Jul	Aug	Sep	Oct	Nov	Dec	Annual Mean
1925	?	?	?	48.9	60.2	31.7	32.9	37.4	49.8	99.2	123.5	214.5	?
1926	138.3	113.7	82.0	91.4	87.4	41.8	36.3	37.9	34.9	69.2	146.6	143.3	85.1
1927	166.7	126.4	120.5	85.2	60.3	52.3	51.1	41.3	22.0	69.0	96.6	106.0	83.0
1928	112.0	92.7	67.9	207.2	113.9	50.9	62.9	53.1	54.4	153.2	122.9	122.9	101.1
1929	184.2	93.5	107.3	47.7	24.1	89.9	51.8	44.5	65.2	68.2	126.4	145.2	87.3
1930	149.7	93.4	62.2	39.8	36.1	24.4	16.6	22.5	35.1	53.1	76.6	87.4	57.9
1931	173.6	170.5	92.2	91.7	36.8	49.9	34.7	33.0	33.0	84.4	84.6	113.6	82.6
1932	90.5	97.3	67.6	76.3	44.3	31.7	19.1	22.2	27.8	61.1	93.0	95.5	60.4
1933	112.6	197.5	98.4	130.4	77.3	45.3	71.6	57.2	34.1	51.5	70.0	134.8	89.4
1934	112.8	96.8	69.5	133.3	75.7	60.0	43.3	56.4	52.1	116.6	92.4	101.5	84.1
1935	150.3	122.2	117.8	75.5	70.7	70.3	34.9	46.6	29.8	51.1	71.1	121.1	80.0
1936	89.7	108.0	92.9	107.0	58.1	29.8	42.9	45.7	56.1	124.9	167.9	117.1	86.5
1937	121.8	106.1	66.6	122.2	66.0	45.4	30.8	27.3	28.2	31.2	55.6	94.2	66.0
1938	169.7	119.6	113.3	175.3	56.5	46.3	40.2	47.9	58.2	71.6	96.8	118.2	92.6
1939	69.5	72.9	66.3	50.3	47.5	58.1	35.9	25.8	46.2	55.2	102.1	123.3	62.6
1940	147.3	151.0	114.7	66.0	91.4	53.3	32.1	28.1	27.9	70.7	81.7	107.8	80.9
1941	120.3	128.9	88.2	53.9	38.9	66.5	44.2	32.0	38.0	33.2	83.5	108.0	69.3
1942	109.7	72.3	84.0	161.0	108.4	37.5	57.0	29.0	36.1	146.1	90.0	106.2	86.6
1943	78.7	126.7	80.5	82.8	41.2	32.9	28.0	28.8	47.2	97.3	106.8	120.5	72.2
1944	103.0	174.5	112.9	140.4	63.3	36.2	45.4	37.5	36.8	72.6	125.6	110.0	87.8
1945	222.1	177.7	120.8	100.4	47.6	37.7	39.1	53.6	92.6	63.9	181.8	138.5	105.8
1946	129.4	144.9	99.8	49.5	35.5	25.7	24.7	50.2	90.0	110.2	59.9	138.7	79.6
1947	90.3	88.1	59.2	37.4	24.9	29.9	28.1	27.6	35.5	98.6	94.9	135.7	62.5
1948	98.9	92.0	69.5	58.6	34.1	50.2	39.4	27.6	31.1	89.5	175.5	124.1	74.1
1949	112.0	171.9	101.8	82.1	101.8	64.7	61.9	49.3	30.8	134.6	100.4	99.2	92.1
1950	180.3	69.7	52.4	44.6	96.4	56.5	45.8	52.6	52.6	51.9	66.8	142.7	76.3
1951	101.2	92.5	69.0	111.6	41.6	25.6	61.2	38.1	34.8	94.8	129.2	120.6	76.6
1952	97.8	183.5	94.9	54.6	67.5	38.9	25.7	21.6	31.2	72.0	80.0	93.9	71.4
1953	81.0	80.0	77.1	81.9	108.9	51.6	31.4	35.3	48.3	40.2	120.0	154.5	75.8
1954	116.3	145.8	108.2	52.7	42.8	52.7	33.1	35.7	30.4	47.2	97.5	103.6	71.7
1955	89.1	207.8	87.5	64.6	128.9	66.6	34.7	42.0	53.8	64.2	73.8	106.7	84.2
1956	114.1	94.8	55.7	111.3	88.3	79.5	55.3	35.7	31.0	55.9	140.6	113.1	81.1
1957	105.6	98.7	73.5	87.7	95.6	42.5	56.6	38.4	28.4	80.0	153.7	280.8	95.3
1958	217.4	260.4	133.8	85.3	95.8	54.9	27.5	30.1	37.1	83.8	89.9	157.9	105.3
1959	91.1	77.9	70.2	59.5	38.8	40.3	27.9	20.7	42.4	48.0	120.4	134.6	64.2
1960	126.2	104.1	100.9	49.3	55.4	56.7	36.5	63.0	67.9	70.4	74.5	70.3	72.9
1961	70.8	92.5	107.1	116.6	39.1	41.9	39.0	44.6	35.5	106.7	115.7	105.0	76.1
1962	142.9	69.4	71.8	37.2	98.8	46.6	65.0	62.1	69.5	127.3	93.0	87.4	81.2
1963	88.4	125.9	86.7	56.0	82.5	60.1	35.8	41.2	66.3	55.9	66.4	66.9	69.0
1964	95.2	80.4	98.5	54.8	84.0	39.2	49.1	43.2	45.0	52.1	77.0	119.0	69.9
1965	158.4	95.2	81.1	50.3	42.7	38.4	29.3	35.3	31.1	49.9	112.1	135.7	71.6
1966	171.3	128.5	85.0	73.5	47.8	34.9	29.5	29.4	40.0	70.6	96.1	106.7	75.8
1967	131.4	97.9	158.8	145.3	62.4	52.3	105.7	85.4	33.6	68.7	148.8	156.5	104.0
1968	100.1	131.6	144.9	95.1	135.6	54.0	36.6	63.4	57.6	111.0	107.3	109.1	95.5
1969	109.7	79.2	79.3	66.1	53.2	31.8	23.6	23.6	141.6	39.6	58.4	158.6	72.0
1970	141.2	80.4	110.3	93.3	36.4	42.8	35.3	87.9	215.7	89.2	113.2	114.1	96.6
1971	78.7	67.9	51.4	38.4	54.1	82.7	27.6	27.9	51.4	103.4	89.3	104.8	64.8
1972	97.1	58.8	111.8	69.3	59.4	42.5	43.5	33.5	74.1	106.7	162.5	97.0	79.7
1973	88.7	65.0	55.9	76.0	62.3	56.6	26.6	32.4	44.5	92.5	145.7	79.7	68.7
1974	74.5	129.9	94.0	113.7	43.5	33.5	36.0	27.1	29.7	73.1	109.2	98.2	71.4
1975	87.1	110.5	127.2	161.2	89.6	55.9	41.8	70.0	57.6	89.1	103.2	96.9	90.6
1976	108.3	64.0	72.4	42.1	52.5	65.4	26.3	27.4	28.3	36.9	49.6	149.3	60.3
1977	115.4	104.9	80.7	58.3	48.8	43.3	40.0	26.6	27.4	49.9	76.5	82.8	62.7
1978	106.5	69.2	83.0	101.5	123.5	53.9	46.7	81.1	83.2	78.9	92.9	99.1	85.1
1979	91.9	102.8	134.5	96.7	129.6	50.1	38.6	43.3	53.7	111.3	120.0	258.8	102.8
1980	173.8	102.1	77.8	80.4	59.6	58.9	42.6	63.5	83.6	93.0	103.0	117.5	88.0
1981	95.1	93.4	151.7	77.3	67.0	82.0	48.6	38.4	36.4	104.1	97.1	143.2	86.3
1982	121.7	101.7	124.6	41.7	65.8	51.2	32.5	33.8	42.9	52.2	182.3	122.0	80.9
1983	142.9	63.1	84.5	93.8	108.1	62.2	68.2	72.0	82.1	181.9	169.1	147.6	106.7
1984	119.5	98.9	102.9	54.5	41.3	31.8	73.3	63.9	43.6	82.2	146.6	261.3	93.6
1985	168.6	71.1	63.9	67.2	49.2	49.3	40.2	56.9	67.4	48.4	93.3	139.3	76.3
1986	108.5	92.0	102.6	84.4	56.2	84.6	52.5	53.6	41.5	80.3	92.1	104.9	79.4
1987	141.8	132.3	127.3	103.6	89.0	85.1	39.6	39.3	46.8	109.1	101.0	98.3	92.5

<b>1988</b>	91.6	88.5	69.1	48.4	47.0	52.1	65.5	64.2	81.1	143.3	133.8	137.5	85.2
<b>1989</b>	112.2	101.3	129.7	63.0	68.6	86.2	47.5	35.7	29.7	30.2	101.8	183.0	82.4
<b>1990</b>	121.6	80.3	78.5	60.6	88.6	63.1	60.9	68.0	35.7	106.1	95.5	161.7	85.3
<b>1991</b>	147.3	137.8	51.5	92.7	36.3	30.0	30.5	95.1	95.9	84.2	67.2	96.8	80.1
<b>1992</b>	116.6	93.8	52.8	41.6	34.1	28.8	31.3	64.6	39.2	78.0	128.1	107.5	68.0
<b>1993</b>	120.6	77.0	86.0	65.0	62.5	115.6	40.3	34.6	34.4	93.3	58.6	81.6	72.5
<b>1994</b>	281.3	80.3	108.6	66.4	52.6	55.8	50.5	51.6	59.7	51.3	208.0	127.4	99.6
<b>1995</b>	128.4	87.7	120.2	138.6	78.2	42.7	32.7	38.2	135.6	120.8	98.7	285.5	109.2
<b>1996</b>	111.4	117.0	88.9	138.8	72.7	49.2	33.2	33.5	49.6	160.6	92.9	88.4	86.2
<b>1997</b>	88.2	108.7	69.3	104.4	57.1	37.9	38.0	62.0	40.5	54.5	90.3	150.6	74.9
<b>1998</b>	129.0	160.2	155.9	96.6	70.6	68.7	103.0	66.9	84.8	174.1	83.3	97.3	107.4
<b>1999</b>	89.4	86.0	101.8	78.2	85.4	60.7	47.7	36.9	47.9	110.4	205.9	71.8	85.0
<b>2000</b>	132.8	95.3	55.7	120.9	74.0	120.1	79.5	55.8	84.6	110.2	68.3	147.7	95.4
<b>2001</b>	88.7	68.9	69.6	39.6	43.4	44.5	32.9	35.1	36.1	70.2	103.0	181.2	67.9
<b>2002</b>	180.0	71.4	68.7	57.9	42.9	77.1	42.7	66.4	98.0	69.9	91.5	129.2	83.1
<b>2003</b>	94.0	92.1	63.4	50.0	111.3	75.9	61.5	35.9	53.3	68.0	85.2	109.5	75.0
<b>2004</b>	138.3	120.2	105.9	46.1	84.3	71.3	49.5	50.2	51.5	?	?	?	?

---

---