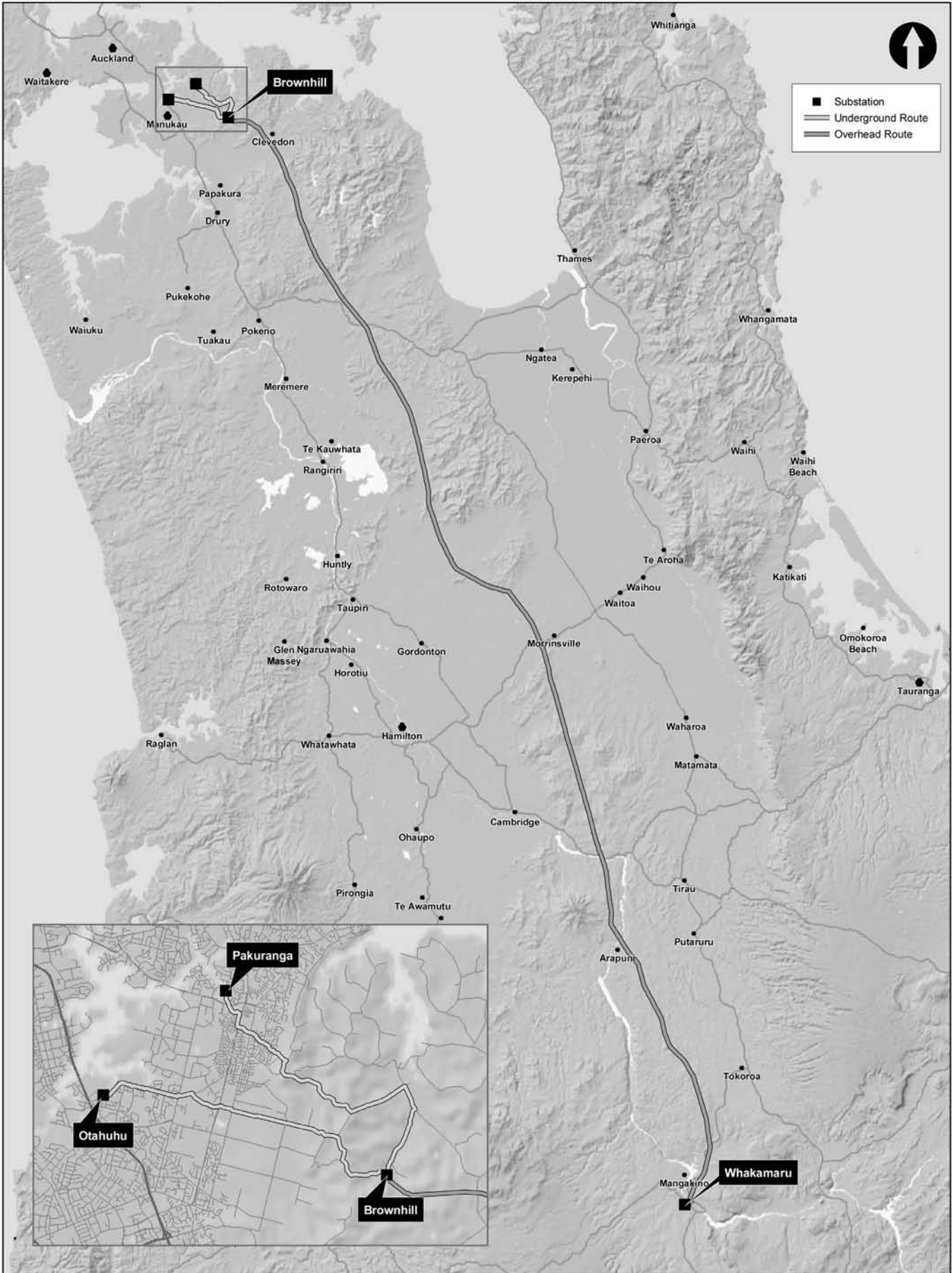





Transpower's proposed new power line



 <p>TRANSPOWER</p>	<p>North Island Grid Upgrade Project</p>	<p>COPYRIGHT (c) 2006 TRANSPOWER NEW ZEALAND LIMITED. ALL RIGHTS RESERVED This document is protected by copyright vested in Transpower New Zealand Limited ("Transpower"). No part of the document may be reproduced or transmitted in any form by any means including, without limitation, electronic, photocopying, recording or otherwise, without the prior written permission of Transpower. No information embodied in the documents which is not already in the public domain shall be communicated in any manner whatsoever to any third party without the prior written consent of Transpower. Any breach of the above obligations may be restrained by legal proceedings seeking remedies including injunctions, damages and costs.</p>	<p>Prepared by:</p>  <p>ems energy market services</p>
<p>Projection: NZTM 2000 Scale: 1:500,000 Plan Size: A3P</p>	 <p>0 2.5 5 10 15 20 25 Kilometres</p>	<p>14 August 2007</p>	